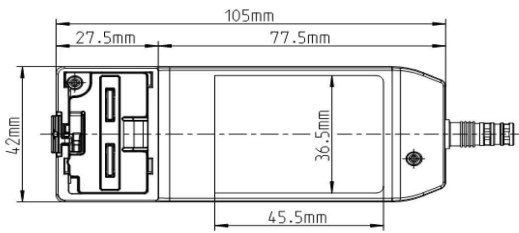


C-LIO-2SN15-1,8M-DIN4--PNG.R001



*picture only for reference

Dimensions

- Length 105mm
- Width 42mm
- Height 37mm

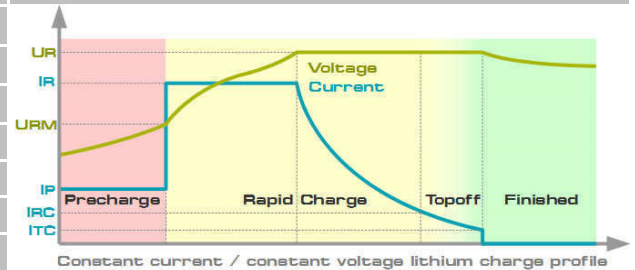
Battery

- Lithium Ion 2 cell
- Thermistor 10k $\beta=3980$ to batt. Neg.

Mechanical Features

- Compact wall plug-in housing
- Output plug Mini-Din 4 pole
- Protection Class 2
- Changeable input plug for worldwide use
- For indoor use only

State of charge	LED	Charge profile
Charge pending	Amber	<ul style="list-style-type: none"> • Manufacturer recommended CC/CV • Low voltage / temperature Precharge • Topoff mode, Safety timers, Temperature monitoring
Precharge	Amber 0,5s on 0,5s off	
Rapid charge	Green 0,5s on 0,5s off	
Charge finished & topoff	Green	
Fault	Red	



Pin layout									
Mini-Din 4 pole	<table border="1"> <tr> <td>Pin1</td> <td>not connected</td> </tr> <tr> <td>Pin2</td> <td>Plus</td> </tr> <tr> <td>Pin3</td> <td>NTC</td> </tr> <tr> <td>Pin4</td> <td>GND</td> </tr> </table>	Pin1	not connected	Pin2	Plus	Pin3	NTC	Pin4	GND
Pin1	not connected								
Pin2	Plus								
Pin3	NTC								
Pin4	GND								

Input Parameters		Output Parameters		
Input voltage	90 - 264 V	Output power	max 24 W	
Input current	9 - 620 mA	Output voltage	min. 8,21V	max. 8,38V
Input frequency	47 - 63 Hz	Output current	min. 1,35A	max. 1,65A
Efficiency	typ. 87%			

Environmental			
Operating temperature	min. 0°C	max. 40°C	
Storage temperature	min. -30°C	max. 80°C	
Humidity	max. 95%		

