



MSJ series MSJ-260



Valve Regulated Lead Acid Battery

Maintenance-Free Sealed Lead Acid Battery.
Absorbent Glass Mat (AGM) technology for efficient gas recombination of up to 99%.

General Design for Standby Power Applications

【Design Life】

Up to 20 Years in Standby Service at 25°C
Eurobat (20°C) : >12 YEARS VERY LONG LIFE

【Operating Temperature Range】

Nominal Operating Temperature : 25°C (77°F)
Discharge : -15°C ~ 50°C (5°F~122°F)
Charge: -15°C ~ 40°C (5°F~104°F)
Storage: -15°C ~ 40°C (5°F~104°F)

【Float Charging Voltage】

2.21 ~ 2.25 VDC/Unit at 25°C (77°F)

【Equalization Charging Voltage】

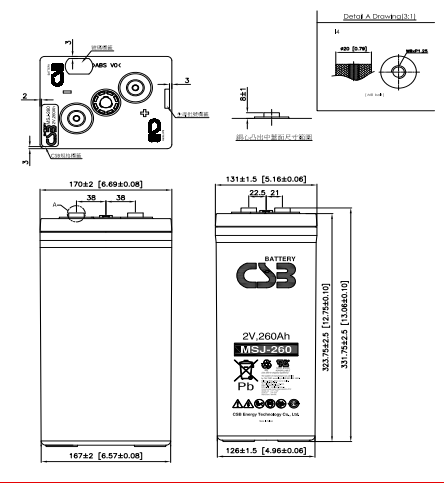
2.35 VDC/Unit at 25°C (77°F)

【Self Discharge】

Less than 10% after 90 days, can be stored up to 6 months at 25°C (77°F);
Fully recharging is required before usage, and charged sooner if stored at higher temperature than 25°C (77°F).

Specification

Nominal Voltage	2V (single cell per unit)		
Nominal Capacity	260 Ah @10hr-rate to 1.80V per cell @25°C (77°F)		
Weight	Approx. 18.70 Kg (41.21 lbs)		
Maximum Discharge Current	1560 A (5sec)		
Internal Resistance	Approx. 0.36 mΩ		
Short Circuit Current	4872A		
Maximum Charge Current	78 A		
Terminal types	I4 thread copper alloy terminal to accept M8 bolt		
Terminal tightening torque	126±25 Kg·cm / 109±22 Lbf·in / 12.3±2.5 N·m		
Container Material	Flame Retardant Polypropylene (UL 94-V0)		
Dimensions	Depth (D)	170.0±2.0 mm	6.69±0.08 inch
	Width (W)	131.0±1.5 mm	5.16±0.06 inch
	Container height (h)	331.0±2.5 mm	13.03±0.10 inch
	Overall Height (H)	339.0±2.5 mm	13.15±0.10 inch



Constant Current Discharge Characteristics Unit: A (25°C, 77°F)

F.V/Time	15MIN	30MIN	60MIN	2HR	2.5HR	3HR	5HR	6HR	8HR	10HR	20HR	24HR
1.60V	463	310	190	109	90.6	78.0	49.2	41.6	32.5	26.9	13.5	11.2
1.67V	415	295	185	107	89.6	77.2	48.7	41.2	32.3	26.7	13.4	11.1
1.70V	390	285	182	107	88.9	76.6	48.4	41.0	32.1	26.6	13.3	11.0
1.75V	351	259	173	104	87.1	75.3	47.6	40.4	31.7	26.2	13.1	10.9
1.80V	300	230	159	100	83.7	72.6	46.1	39.2	30.8	26.0	13.0	10.8
1.83V	265	211	149	95.3	80.3	69.8	44.6	38.1	30.0	24.9	12.4	10.4

Constant Power Discharge Characteristics Unit: W (25°C, 77°F)

F.V/Time	15MIN	30MIN	60MIN	2HR	2.5HR	3HR	5HR	6HR	8HR	10HR	20HR	24HR
1.60V	811	563	345	208	173	149	97.6	83.6	64.0	50.1	25.1	20.9
1.67V	754	541	339	206	171	148	97.0	83.1	63.6	49.8	24.9	20.7
1.70V	724	527	334	204	170	147	96.5	82.8	63.3	49.5	24.8	20.6
1.75V	662	493	320	200	167	144	95.3	81.8	62.3	48.9	24.4	20.4
1.80V	594	445	299	192	161	140	92.9	79.8	60.5	47.5	23.7	19.8
1.83V	535	415	282	184	155	135	90.4	77.7	58.6	46.0	23.0	19.2

Please refer to the official site for the latest rating confirmation. URL: www.csb-battery.com

Issued: 200926

Sales Offices

希世比能源科技股份有限公司
CSB Energy Technology Co., Ltd.

BUSINESS HEADQUARTERS

Tel: +886-2-2880-5600
Fax: +886-2-2888-3300

USA OFFICE

Tel: +1-817-244-7777 / 1-(800)3-CSB-USA (272872)
Fax: +1-817-244-4445

SHENZHEN OFFICE (CHINA)

Tel: +86-755-8831-6488/6775/6075
Fax: +86-755-8831-6548

EUROPE (EMEA) OFFICE

Tel: +31(0)180-418-140
Fax: +31(0)180-418-327

SHANGHAI OFFICE (CHINA)

Tel: +86-21-5046-1622/0833/0094
Fax: +86-21-5046-1046

Recognized under UL 1989,
and certified by ISO 9001, 14001, 45001, 50001.



TAIPEI OFFICE

Tel: +886-2-2880-5600
Fax: +886-2-2888-3300

BEIJING OFFICE (CHINA)

Tel: +86-10-6597-8065/8165/8265
Fax: +86-10-6597-8565